

FALCONBRIDGE WIND FARM PROJECT Site Considerations Information

Renewable Energy Systems Canada Inc.

Table of Contents

<u>1.0</u>	<u>Introduction to Site Considerations Information</u>	<u>1</u>
<u>2.0</u>	<u>Site Considerations Information Mapping</u>	<u>3</u>
	Figure 1: Project Location	
	Figure 2: Natural Features	
	Figure 3: Property Boundaries	
	Figure 4: Municipal and Geographic Township Boundaries	
<u>3.0</u>	<u>Site Considerations Information Background Information and Data Sources</u>	<u>8</u>



1.0 Introduction to Site Considerations Information

The Independent Electricity System Operator (IESO) in Ontario has asked proponents of renewable energy projects to submit applications (proposals) for energy contracts. In response to the IESO's request for proposals (RFP) for phase one of the large renewable procurement (LRP I), Renewable Energy Systems Canada Inc. (RES Canada) is proposing a wind energy project, to be known as the Falconbridge Wind Farm project, which would be located in the City of Greater Sudbury (see *Figure 1*). The project is expected to be up to 150MW in size, include a transformer substation, low-voltage electrical collector lines, access roads, and a transmission line and construction laydown and work areas.

The RFP I LRP requires that specific activities be undertaken prior to submitting a proposal to the IESO. These activities include public, municipal, Aboriginal and other stakeholder consultation and the presentation of Site Considerations mapping and Site Considerations Information (SCI). The SCI is specific to the LRP I RFP and the following features associated with, or located near to the project:

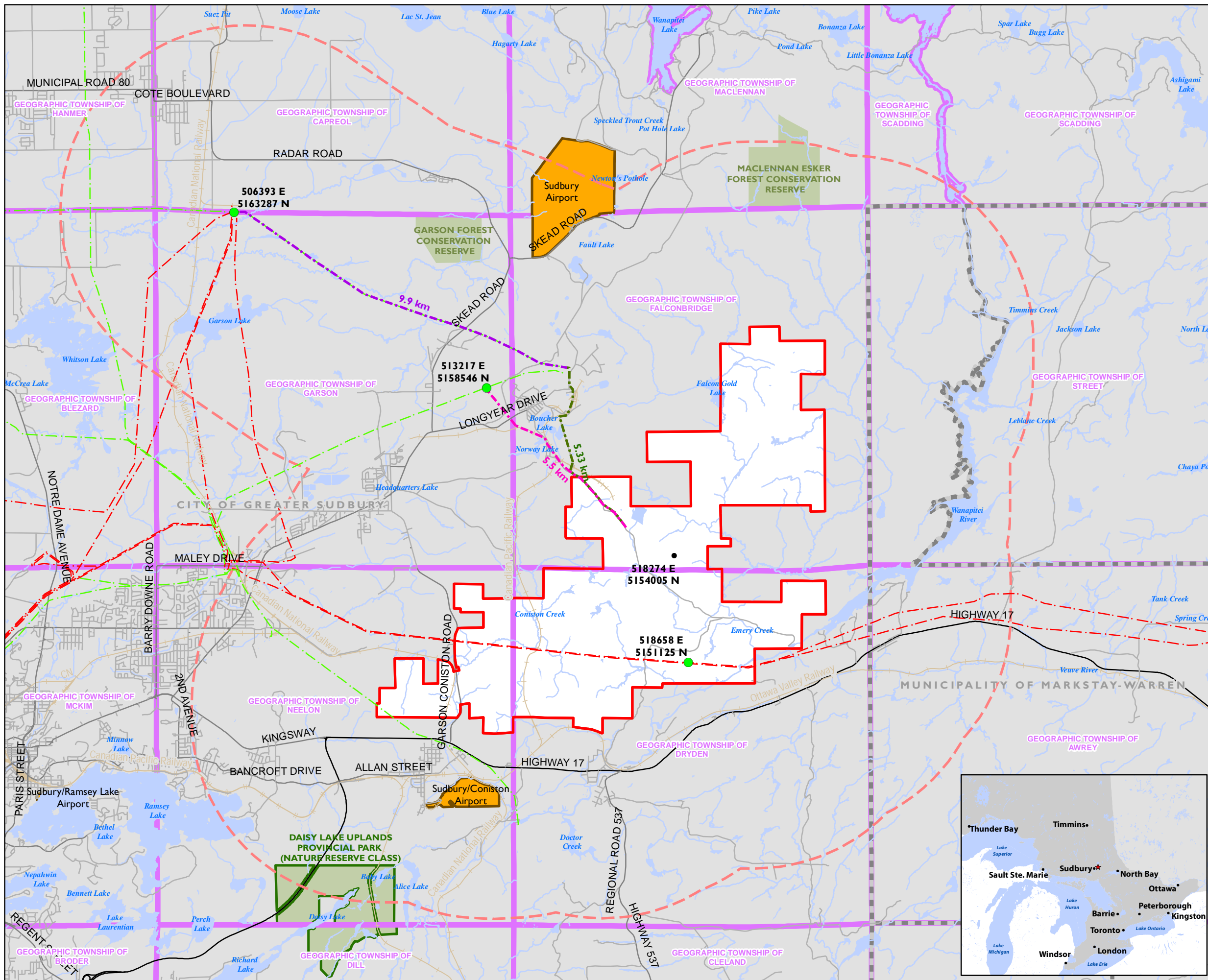
- The proposed project Site boundary, and Connection Line and Connection Point;
- To the extent available, the location of key features, such as access roads, internal driveways, equipment, etc.;
- Local and regional administrative and political boundaries, as well as First Nation Lands;
- Infrastructure such as highways, railways, airports, aerodromes and weather radars;
- Property boundaries, for both private landowners and provincial Crown lands (in the form of crown land grid cells);
- Natural heritage features such as water bodies, provincially significant areas of natural and scientific interest, provincially significant wetlands, and areas designated by Natural Heritage Information Centre as containing "Endangered" or "Threatened" species observation records;
- Recreational lands such as national or provincial parks and provincial conservation reserves;
- Lands designated under the *Niagara Escarpment Planning and Development Act*, the *Oak Ridges Moraine Conservation Act*, 2011, the *Greenbelt Act*, 2005, and the *Lake Simcoe Protection Act*, 2008;
- Other existing wind farms and/or approved but un-built wind farms within 5km; and,
- Recognized cultural heritage resources.

This SCI report provides four maps produced to show the above listed features (where applicable) and two summary tables to assist you in understanding the content of the maps as well as the data sources used and research undertaken to produce the maps. Correspondence with the municipality and Ontario Heritage Trust with regard to cultural heritage is also provided. It must be stressed that the information presented in this report is provided in response to the requirements of the LRP I RFP and should be considered as preliminary; it will be further refined should the project receive a contract from the IESO.

Site Considerations Information is not an Environmental Assessment. The Site Considerations information is based on secondary data sources (no field surveys are required for it) and is intended to inform the public and the IESO of the general project site characteristics. It is understood that this information will be considered by the IESO in the evaluation of the project bid submissions. Should the project be awarded a contract, a Renewable Energy Approval (REA) will be required from the Ministry of the Environment and Climate Change (MOECC) for the project to move ahead. The REA process requires extensive reporting (in the style of an Environmental Assessment) and numerous consultation activities. Significant data collection activities, including natural heritage field surveys, noise modeling and public, Aboriginal, municipal and other stakeholder consultation will be undertaken to assess potential negative environmental effects of the project, and to develop mitigation measures to reduce these effects. RES Canada is committed to identifying areas that could potentially be impacted and working with the local community to minimize these impacts.

RES Canada welcomes any questions you may have on the mapping and information provided in this SCI report. Additional information on potential project layouts and visual impact assessment is provided in the information panels presented at the public community meeting on July 29, 2015 and which are available for download at www.falconbridgewind.com.

2.0 Site Considerations Information Mapping



Renewable Energy Systems Canada Inc.
FALCONBRIDGE WIND FARM PROJECT

PROJECT LOCATION
FIGURE 1

- Project Centroid
- Connection Point
- Connection Line (Option 1)
- Connection Line (Option 2)
- Existing/Idle Transmission Line (Option 2)
- Existing 230 kV Transmission Line
- Existing 115 kV Transmission Line
- Railway
- Project Site Boundary
- 5 km from Project Site and Connection Line Options
- Municipal Boundary
- Permanent Known Waterbody
- Airport
- Geographic Township
- Conservation Reserve
- Provincial Park

Notes:
 1) There are no First Nation Lands, national parks, or weather radars within the mapped area.
 2) There are no constructed nor proposed but unconstructed Renewable Generating Facilities that utilize On-Shore Wind as a Renewable Fuel and have received a Renewable Energy Approval within the mapped area.
 3) The project and/or connection line options are not located within or abutting an area designated in the Niagara Escarpment, Oak Ridges Moraine, Greenbelt, or Lake Simcoe Watershed plans.
 4) There are no recognized heritage resources (including protected properties and national historic sites) within or abutting the Project Site or Connection Line options



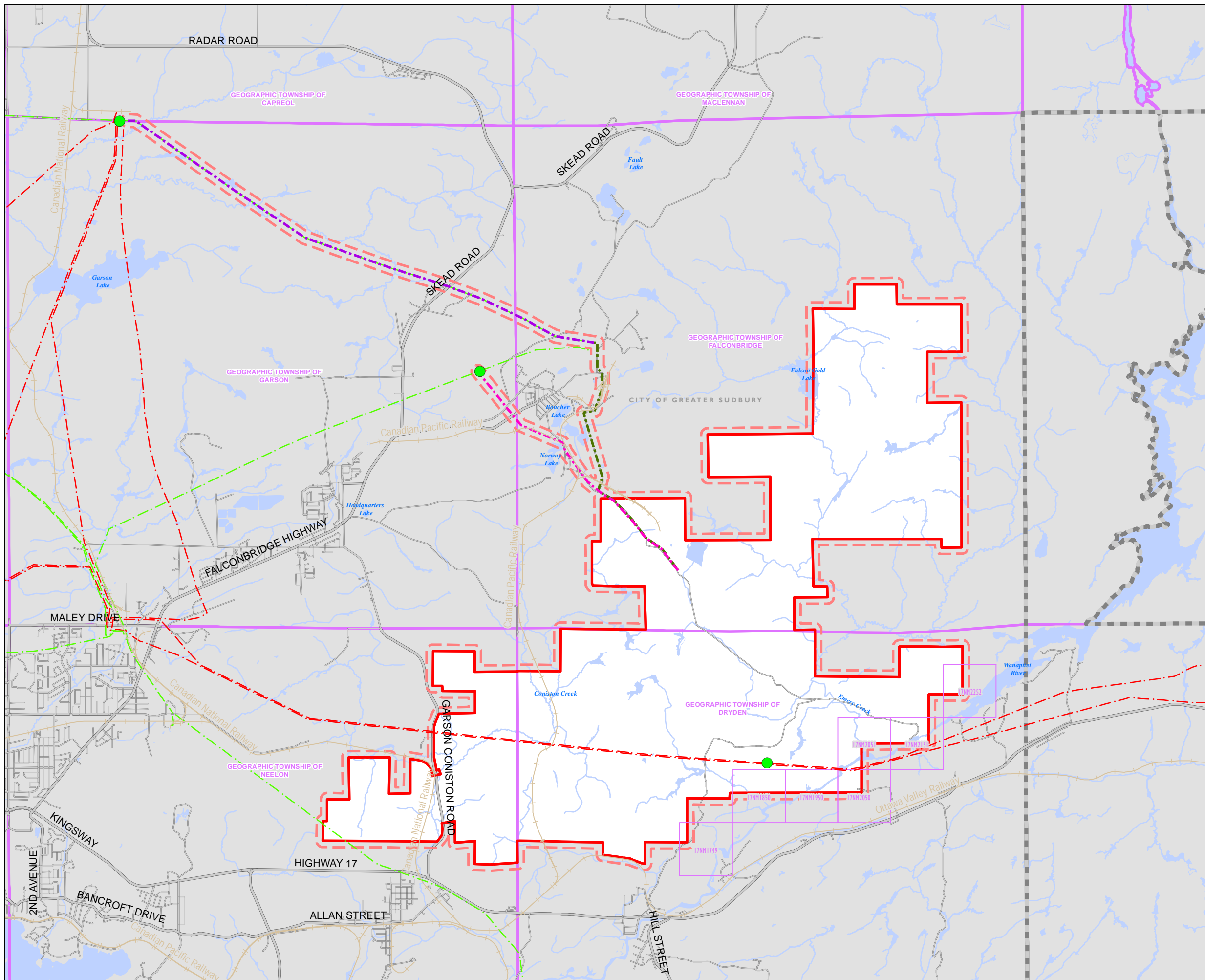
MAP DRAWING INFORMATION:
 DATA PROVIDED BY MNR
 Base Obtained from Land Information Ontario, May 4th 2015.

MAP CREATED BY: GM
 MAP CHECKED BY: DR
 MAP PROJECTION: NAD 1983 UTM Zone 17N

FILE PATH:
 I:\GIS\15XXXX - RES Falconbridge\Mapping\Site Consideration\Figure 1 Project Location.mxd



PROJECT: 151998
 STATUS: FINAL
 DATE: 7/9/2015



Renewable Energy Systems Canada Inc.
FALCONBRIDGE WIND FARM PROJECT

NATURAL FEATURES
FIGURE 2

- Railway
- Connection Point
- Connection Line (Option 1)
- Connection Line (Option 2)
- Existing/Idle Transmission Line (Option 2)
- Existing 230 kV Transmission Line
- Existing 115 kV Transmission Line
- Project Site Boundary
- 120 m from Project Site and Connection Line Options
- NHIC* 1 km Grid Square with "Endangered" or "Threatened" Species
- Municipal Boundary
- Geographic Township
- Permanent Known Waterbody

Notes:
 1) There are no Provincially Significant Wetlands or ANSI's within the mapped area

1:70,000
 0 0.5 1 2 km



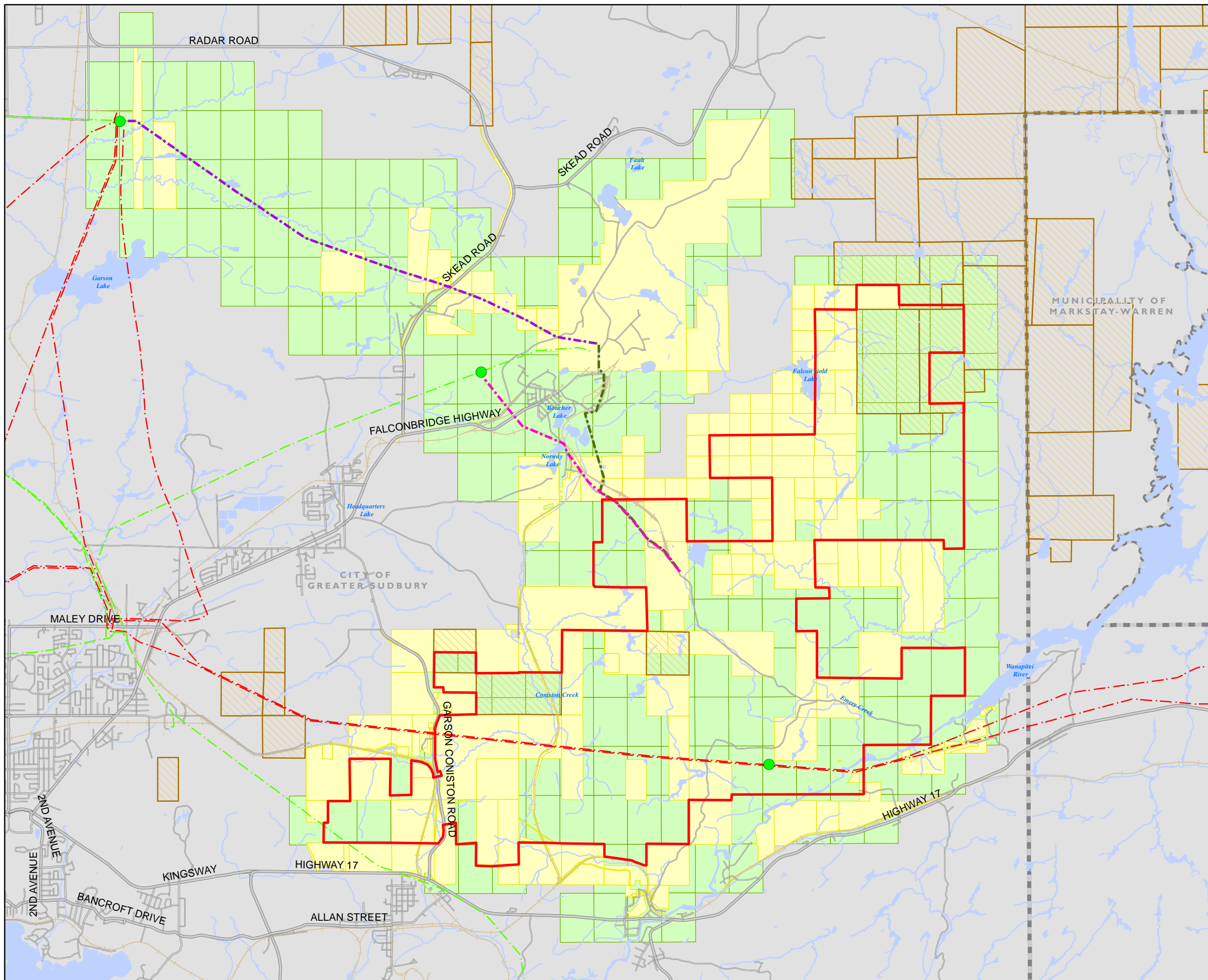
MAP DRAWING INFORMATION:
 DATA PROVIDED BY MNRF
 Base Data obtained from Land Information Ontario, May 4th 2015.
 *NHIC Data obtained from Land Information Ontario, June 9th 2015.

MAP CREATED BY: GM
 MAP CHECKED BY: DR
 MAP PROJECTION: NAD 1983 UTM Zone 17N

FILE PATH:
 I:\GIS\15XXXX - RES Falconbridge\Mapping\Site Consideration\Figure 2 Natural Features.mxd



PROJECT: 151998
 STATUS: FINAL
 DATE: 7/9/2015

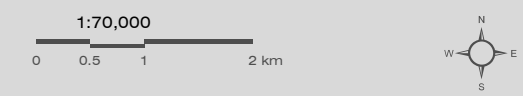


Renewable Energy Systems Canada Inc.
FALCONBRIDGE WIND FARM PROJECT

PROPERTY BOUNDARIES
FIGURE 3

- Connection Point
- - - Connection Line (Option 1)
- - - Connection Line (Option 2)
- - - Existing/Idle Transmission Line (Option 2)
- - - Existing 230 kV Transmission Line
- - - Existing 115 kV Transmission Line
- Railway
- Project Site Boundary
- Municipal Boundary
- Mining Claim
- Private Property Boundaries for each property on and abutting the site and connection line
- Crown Land Boundaries for each property on or abutting the site and connection line
- Permanent Known Waterbody

- Notes:
- 1) Properties as defined by the IESO include applicable crown land grid cells and private property
 - 2) No Crown Land Leaseholders are present within the mapped area



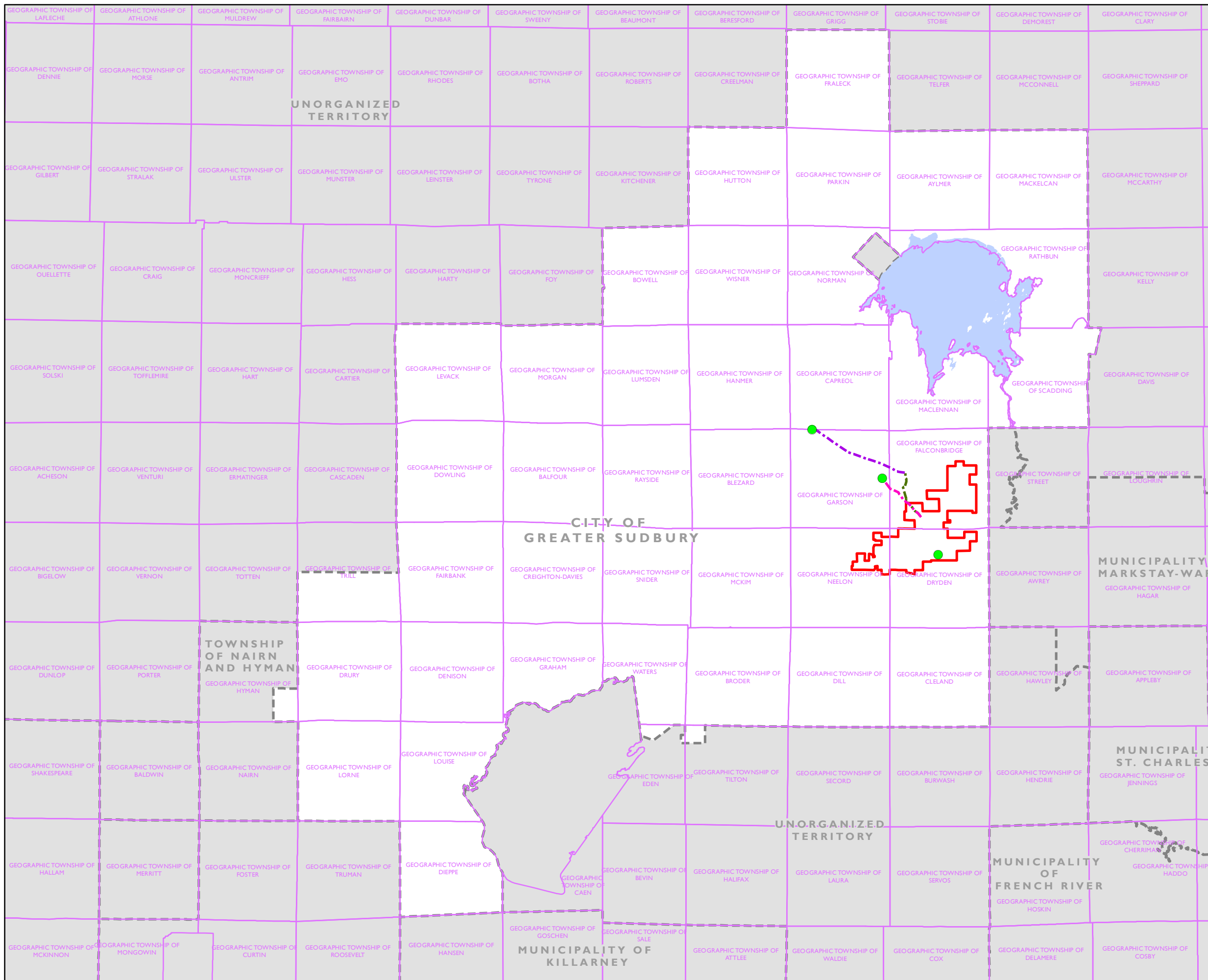
MAP DRAWING INFORMATION:
 DATA PROVIDED BY MNRF & MNDM
 Base Obtained from Land Information Ontario, May 4th 2015.
 MNDM obtained June 5th, 2015.

MAP CREATED BY: GM
 MAP CHECKED BY: DR
 MAP PROJECTION: NAD 1983 UTM Zone 17N

FILE PATH:
 I:\GIS\15XXXX - RES Falconbridge\Mapping\Site Consideration\Figure 3 Property Boundaries.mxd



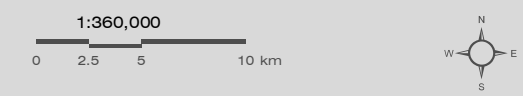
PROJECT: 151998
 STATUS: FINAL
 DATE: 7/9/2015



Renewable Energy Systems Canada Inc.
FALCONBRIDGE WIND FARM PROJECT

MUNICIPAL AND GEOGRAPHIC TOWNSHIP BOUNDARIES
FIGURE 4

- Connection Point
- - - Connection Line (Option 1)
- - - Connection Line (Option 2)
- - - Existing/Idle Transmission Line (Option 2)
- Project Site Boundary
- Municipal Boundaries
- City of Greater Sudbury
- Geographic Township
- Waterbody



MAP DRAWING INFORMATION:
 DATA PROVIDED BY MNR
 Base Obtained from Land Information Ontario, May 4th 2015.

MAP CREATED BY: GM
 MAP CHECKED BY: DR
 MAP PROJECTION: NAD 1983 UTM Zone 17N

FILE PATH:
 I:\GIS\15XXXX - RES Falconbridge\Mapping\Site Consideration\Figure 4 Municipal and Geographic Townships.mxd



PROJECT: 151998
 STATUS: FINAL
 DATE: 7/9/2015

3.0

Site Considerations Information Background Information and Data Sources

Table 1: Site Considerations Information

Site Considerations Information Requirements from LRP I RFP Section 3.2.6 (b)		Sources of Information and Proponent Comments
(i)	The Registered Proponent must have provided detailed scale maps of the Large Renewable Project and the proposed Connection Line at a suitable and clearly labelled scale to clearly identify (collectively, the “Site Considerations Information”):	
(1)	the Site , and if the Site is constituted by more than one (1) non-contiguous Properties, a scale map showing the outer boundary of the entire Site must be included;	The outer boundary of the Site is shown on Figure 1 and Figure 2 in red and identifies the maximum area within which project components (other than the Connection Line Options) will be located.
(2)	the proposed Connection Line and Connection Point , showing the length of the proposed Connection Line, the GPS coordinates for the Site and the Connection Point, and any other TS (or associated feeder) or the Circuit connected to the IESO-Controlled Grid that is closer in geographic proximity to the Site than the proposed Connection Point;	Two Connection Line Options and Connection Points are shown in Figure 1 and Figure 2. Only one of these Options will be chosen for the final proposal to the IESO. There are no other Transformer Stations (TS) or Circuits connected to the IESO-controlled grid that is closer in proximity to the Site than the proposed Connection Points. Source: http://www.hydroone.com/RegulatoryAffairs/Documents/EB-2012-0031/Exhibit%20A/A-07-01.pdf
(3)	to the extent available, the proposed location of key features of the Large Renewable Project such as access roads, internal driveways, Generating Equipment, structures, transformers, inverters and communications towers;	At this time only the Site boundary and Connection Line Options have been finalized. These are shown in Figure 1 and Figure 2.
(4)	the boundaries of any Municipality and Unorganized Territory in which the Site or the proposed Connection Line is to be located, in whole or in part, including the identity of each such Municipality and, if applicable, Unorganized Territory;	The Site and Connection Line Options are located in the City of Greater Sudbury. The municipal boundaries are shown on Figure 1 and Figure 2. The project is not located in Unorganized Territory. Municipal boundary data layers were obtained from: LIO Warehouse Open Data – (MUNIC_BND_LOWER_AND_SINGLE), 4 May 2015
(5)	the boundaries of any First Nation Lands on which the Site or the proposed Connection Line is to be located, in whole or in part, including the identity of the First Nation Lands and the Corresponding First Nation Community;	Neither the Site nor the proposed Connection Line Options are located on First Nation Lands. First Nation Lands boundary data layers were obtained from: LIO Warehouse Open Data – (INDIAN_RESERVE), 4 May 2015 Data was confirmed using the Government of Canada’s Aboriginal and Treaty Rights Information System. See: http://sidaat-atris.aadnc-aandc.gc.ca/atris_online/
(6)	the boundaries of any geographic township (identified pursuant to the <i>Territorial Division Act, 2002</i> , SO 2002, c 17, Sched. E) in which the Large Renewable Project or the proposed Connection Line is to be located, in whole or in part, including the identity of each such geographic township;	The project is located in the geographic townships of Falconbridge, Neelon, and Dryden, as shown in Figure 1. Geographic township information was obtained from: LIO Warehouse Open Data – (GEOGRAPHIC_TOWNSHIP_IMPR), 4 May 2015
(7)	any “highway” (as defined in the <i>Highway Traffic Act</i> , RSO 1990, c H.8) crossing or located within five (5) kilometres of the Site or the proposed Connection Line, including the location, name and number of each such highway;	Highway 17 is located approximately 560 m south of the Site at its nearest point. All other infrastructure used by the general public for the passage of vehicles is provided on Figure 1 and Figure 2. Highway information was obtained from: LIO Warehouse Open Data – (ORN_SEGMENT_WITH_ADDRESS), 4 May 2015.

Site Considerations Information Requirements from LRP I RFP Section 3.2.6 (b)		Sources of Information and Proponent Comments
(8)	any “ railway ” (as defined in the <i>Canada Transportation Act</i> , SC 1996, c 10) crossing or located within five (5) kilometres of the Site or the proposed Connection Line, including the location and name of each such railway;	<p>Multiple railways are located within 5 km of, or cross, the Site and the Connection Line Options. These include the following:</p> <ul style="list-style-type: none"> • Canadian Pacific Railway (CP) line and spur lines, crosses in the southwest and northwest portions of the Site and Connection Options 1 and 2; • Ottawa Valley Railway, to the south of the Site; and, • Canadian National Railway line and spur lines, crosses the southwest portion of the Site and is within 5 km of Connection Option 2. <p>Railways are shown on Figure 1. Railway information was obtained from: LIO Warehouse Open Data – (ORWN_TRACK), 4 May 2015</p>
(9)	any national park (identified in Schedule 1 of the <i>Canada National Parks Act</i> , SC 2000, c 32), provincial park or conservation reserve (identified pursuant to the <i>Provincial Parks and Conservation Reserves Act</i> , 2006, SO 2006, c 12) located within one hundred and twenty (120) metres of the Site or the proposed Connection Line, including the location and name of each such park or conservation reserve;	<p>No national parks, provincial parks or conservation reserves are located within 120 m of the Site or Connection Line Options.</p> <p>National park, provincial park and conservation reserve data was obtained from: LIO Warehouse Open Data – (PROV_PARK_REGULATED), 4 May 2015 LIO Warehouse Open Data – (CONSERVATION_RESERVE), 4 May 2015 LIO Warehouse Open Data – (FEDERAL_PROTECTED_AREA), 4 May 2015</p>
(10)	any airports, aerodromes and weather radars located within five (5) kilometres of the Site or the proposed Connection Line, including the location and name of each such airport, aerodrome and weather radar;	<p>Two airports are located within 5 km of the Site or proposed Connection Line options. The Sudbury Airport (CYSB) is located approximately 4.8km to the northwest of the Site and within 2.4 km of Connection Line Option 2 at its nearest point. Sudbury/Coniston Airport (CSC9) is located approximately 1.2km south of the Site at its nearest point. Airports are shown in Figure 1.</p> <p>No weather radars are located within 5 km of the Site or the Connection Line options.</p> <p>Data was obtained from the following sources: LIO Warehouse Open Data – (AIRPORT_OFFICIAL), 4 May 2015 Environnement Canada - https://www.ec.gc.ca/meteo-weather/default.asp?lang=En&n=F54C857E-1, June 15, 2015.</p>
(11)	the Property boundaries for each Property on which the Site is located, each Property that Abuts Property on which the Site is located, each Property where the proposed Connection Line will be situated, and each Property that Abuts a Property where the proposed Connection Line will be situated;	<p>Property boundaries are provided on Figure 3 and Figure 4. For portions of the project that are located on crown land, a “property” is a crown land grid cell. The boundaries of all crown land grid cells and private properties on which the Site or Connection Line Options are located are shown in Figure 3. All crown land grid cells and private properties abutting the boundary of the properties on which the Site is located are provided in Figure 4.</p> <p>Property boundary information was purchased from First Base Solutions. Crown land grid cell data was obtained from: LIO Warehouse Open Data – (CL_UNPATENTED), 4 May 2015 LIO Warehouse Open Data – (CL_NON_FREEHOLD_DISPOSITION), 4 May 2015</p>

Site Considerations Information Requirements from LRP I RFP Section 3.2.6 (b)		Sources of Information and Proponent Comments
(12)	any Permanent Known Water Body located within one hundred and twenty (120) metres of the Site or the proposed Connection Line, including the location and, if applicable, the common name associated with each such Permanent Known Water Body;	<p>Permanent water bodies are shown in Figure 1 and Figure 2. Multiple permanent water bodies are located within 120 m of the Site or Connection Line options, including:</p> <ul style="list-style-type: none"> - Whitson Lake; - Garson Lake; - Fault Lake; - Boucher Lake; - Norway Lake; - Falcon Gold Lake; - Headquarters Lake; - Coniston Creek; - Emery Creek; - Wanapitei River; and, - Various other tributaries, unnamed watercourses, ponds and lakes. <p>Permanent Known Water Body information was obtained from: LIO Warehouse Open Data – (OHN_WATERBODY), 4 May 2015 LIO Warehouse Open Data – (OHN_WATERCOURSE), 4 May 2015 LIO Warehouse Open Data – (OHN - SMALL SCALE WATERCOURSE - OHN_100K_WATERCOURSE), 4 May 2015</p>
(13)	if the Large Renewable Project is to utilize On-Shore Wind as its Renewable Fuel:	
(i)	the location of any other Renewable Generating Facilities that utilize On-Shore Wind as a Renewable Fuel that have been constructed and are located within five (5) kilometres of the Site clearly identifying the location of each turbine; and	<p>There are no other Renewable Generating Facilities that utilize On-Shore Wind as a Renewable Fuel that have been constructed and are located within five (5) kilometres of the Site.</p> <p>Information was obtained from general internet searches as well as the following: www.ontario.ca/environment-and-energy/renewable-energy-projects-listing.</p>
(ii)	the location of the Site boundary for any proposed but unconstructed Renewable Generating Facilities that utilize On-Shore Wind as a Renewable Fuel that are located within five (5) kilometres of the Site and which have received a Renewable Energy Approval as indicated at www.ontario.ca/environment-and-energy/renewable-energy-projects-listing ;	<p>There are no proposed but unconstructed Renewable Generating Facilities that utilize On-Shore Wind as a Renewable Fuel that have received a Renewable Energy Approval are located within five (5) kilometres of the Site.</p> <p>Renewable Energy Approval information was obtained from: www.ontario.ca/environment-and-energy/renewable-energy-projects-listing.</p>
(14)	if the Large Renewable Project is to be located on provincial Crown lands (in whole or in part):	
(i)	the boundaries of each Property on which the Site is located, and that Abuts the Property on which the Site is located; and	<p>The boundaries of all crown land grid cells on or abutting the Site or Connection Line Options are shown in Figure 3 and Figure 4. The crown land grid cell data was obtained from: LIO Warehouse Open Data – (CL_UNPATENTED), 4 May 2015 LIO Warehouse Open Data – (CL_NON_FREEHOLD_DISPOSITION), 4 May 2015</p>

Site Considerations Information Requirements from LRP I RFP Section 3.2.6 (b)			Sources of Information and Proponent Comments
	(ii)	every Provincial Crown Land Lease located on a Property on which the Site is located, and that Abuts the Property on which the Site is located;	Based on an extensive search at the Land Registry Offices in the City of Greater Sudbury there are no crown land lease holders on a property on or abutting the Site. There are multiple mining claims located within and abutting the Site, these are shown on Figure 3. Mining Claim locations obtained from: LOI Warehouse Open Data – (MNDM), June 5, 2015
	(15)	if the Large Renewable Project or the proposed Connection Line is to be located:	
	(i)	within a Natural Heritage Information Centre one (1) kilometre grid square which contains an “ Endangered ” or “ Threatened ” species observation record (protected pursuant to the <i>Endangered Species Act, 2007</i> , SO 2007, c 6);	The Site and Connection Line Options are intersected by 7 NHIC grid squares containing “endangered” or “threatened” species observation records, listed as follows: <ul style="list-style-type: none"> - 17NM2252 - 17NM2051 - 17NM2151 - 17NM1850 - 17NM1950 - 17NM2050 - 17NM1749 The grid squares and associated numbers are indicated on Figure 2. Information was obtained from: LIO Warehouse Open Data – (UTM_1KM_GRID.shp), June 9, 2015 NHICSPEC.dbf - https://contrib.ontario.ca/environment-and-energy/get-natural-heritage-information
	(ii)	within one hundred and twenty (120) metres of a provincially significant area of natural and scientific interest ;	Neither the Site nor the Connection Line Options are located within 120 m of a provincially significant area of natural or scientific interest (ANSI). LIO Warehouse Open Data – (ANSI), 4 May 2015
	(iii)	within one hundred and twenty (120) metres of a known provincially significant wetland ;	Neither the Site nor the Connection Line Options are located within 120 m of a known provincially significant wetland. LIO Warehouse Open Data – (WETLAND), 4 May 2015
	(iv)	within or Abutting an area designated in the plan approved under the <i>Niagara Escarpment Planning and Development Act</i> , the plan approved under the <i>Oak Ridges Moraine Conservation Act</i> , 2011 and O. Reg. 142/02, the plan approved under the <i>Greenbelt Act</i> , 2005, and the Lake Simcoe watershed (as defined in the <i>Lake Simcoe Protection Act</i> , 2008); and	Neither the Site nor the Connection Line Options are located in an area designated in the plan approved under the <i>Niagara Escarpment Planning and Development Act</i> , the plan approved under the <i>Oak Ridges Moraine Conservation Act</i> , the plan approved under the <i>Greenbelt Act</i> or the Lake Simcoe Watershed. To make this determination the following were reviewed: LIO Warehouse Open Data – (NE_PLAN_DESIGNATION), 4 May 2015 LIO Warehouse Open Data – (ORM_LAND_USE_DESIGNATION), 4 May 2015 LIO Warehouse Open Data – (LAKE_SIMCOE_PAWB), 4 May 2015

Site Considerations Information Requirements from LRP I RFP Section 3.2.6 (b)		Sources of Information and Proponent Comments
(v)	within or Abutting a recognized heritage resource (including Properties protected under the <i>Ontario Heritage Act</i> , RSO 1990, c O.18, Properties included on a list or register of heritage resources maintained by the Municipality, Properties that are the subject of a local or provincial plaque, or Properties that are set aside as a national historic site of Canada under Section 42 of the <i>Canada National Parks Act</i> , SC 2000, c 32).	Neither the Site nor the Connection Line Options are located within or abutting a recognized heritage resource. Please see Table 2: Cultural Heritage Screening for further information and data sources.

Table 2: Cultural Heritage Screening (in support of the site considerations information)

MTCS Cultural Heritage Requirements		Sources of Information and Proponent Comments
A determination of whether the [Site or Connection Line] is on a property described in Column 1 of the Table to section 19 of <i>Ontario Regulation 359/09</i> (collectively, “protected properties”):		
(1)	A property that is the subject of an agreement, covenant or easement entered into under clause 10(1) (b) of the <i>Ontario Heritage Act</i>	Correspondence with the Ontario Heritage Trust (received June 24, 2015) confirmed that neither the Site nor Connection Line Options are on such a property.
(2)	A property in respect of which a notice of intention to designate the property to be of cultural heritage value or interest has been given in accordance with section 29 of the <i>Ontario Heritage Act</i> .	Correspondence with the City of Greater Sudbury (received June 25, 2015) confirmed that neither the Site nor Connection Line Options are on such a property.
(3)	A property designated by a municipal by-law, made under section 29 of the <i>Ontario Heritage Act</i> as a property of cultural heritage value or interest.	Correspondence with the City of Greater Sudbury (received June 25, 2015) confirmed that neither the Site nor Connection Line Options located within that municipality are on such a property.
(4)	A property designated by order of the Ministry of Tourism, Culture and Sport made under section 34.5 of the <i>Ontario Heritage Act</i> as a property of provincial significance.	At the time of publication, no such properties designated by the Minister of Tourism, Culture and Sport. See: http://www.mtc.gov.on.ca/en/publications/REA_INFO_BULLETIN.pdf
(5)	A property in respect of which a notice of intention to designate the property as property of cultural heritage value or interest of provincial significance has been given in accordance with section 34.6 of the <i>Ontario Heritage Act</i> .	Neither the Site nor the Connection Line options are located on such a property. See: http://www.mtc.gov.on.ca/en/publications/REA_INFO_BULLETIN.pdf
(6)	A property that is the subject of an easement or a covenant entered into under section 37 of the <i>Ontario Heritage Act</i> .	Correspondence with the City of Greater Sudbury (received June 25, 2015) confirmed that neither the Site nor Connection Line Options are on such a property.
(7)	A property that is part of an area designated by a municipal by-law made under section 41 of the <i>Ontario Heritage Act</i> as a heritage conservation district.	Correspondence with the City of Greater Sudbury (received June 25, 2015) confirmed that neither the Site nor Connection Line Options are on such a property.

MTCS Cultural Heritage Requirements		Sources of Information and Proponent Comments
(8)	A property designated as a historic site under Regulation 880 of the Revised Regulation of Ontario, 1990 (Historic Sites) made under the <i>Ontario Heritage Act</i> .	At the time of publication, only three historic sites are designated under Regulation 880, none of which are located in the vicinity of the Site or Connection Line options. See: https://www.canlii.org/en/on/laws/regu/rro-1990-reg-880/latest/rro-1990-reg-880.html
Cultural Heritage Resources REA Checklist: Consideration of Potential for Heritage Resources (from: <i>An Information Bulletin for Projects Subject to Ontario Regulation 359/09 – Renewable Energy Approvals</i> , Ministry of Tourism, Culture and Sport, updated August 2013)		
(1)	Is the [Site or Connection Line] situated on a parcel of land that abuts any protected property as described in Column 1 of the Table in section 19 [of <i>Ontario Regulation 359/09</i>]?	Neither the Site nor Connection Line Options are situated on a parcel of land that abuts such a property. Sources used to make this determination include correspondence with the Ontario Heritage Trust (received June 24, 2015) and the City of Greater Sudbury (received June 25, 2015). Additionally, the following database was searched: http://www.hpd.mcl.gov.on.ca/scripts/hpdsearch/english/default.asp
(2)	Is the [Site or Connection Line] situated on a parcel of land that is included on the Ministry of Tourism, Culture and Sport's list of provincial heritage properties?	Neither the Site nor Connection Line Options are situated on such a parcel of land. Sources used to make this determination include correspondence with the Ontario Heritage Trust (received June 24, 2015) and the City of Greater Sudbury (received June 25, 2015). Additionally, the following database was searched: http://www.hpd.mcl.gov.on.ca/scripts/hpdsearch/english/default.asp
(3)	Is the [Site or Connection Line] situated on a parcel of land that is included on a register or inventory of heritage properties maintained by the municipality?	Neither the Site nor Connection Line Options are situated on such a parcel of land. Sources used to make this determination include correspondence with the City of Greater Sudbury (received June 25, 2015) and are listed above under protected properties. Additionally, the following database was searched: http://www.hpd.mcl.gov.on.ca/scripts/hpdsearch/english/default.asp
(4)	Is the [Site or Connection Line] situated on a parcel of land that is the subject of a municipal, provincial or federal plaque?	Neither the Site nor Connection Line Options are on a parcel of land subject to a federal, provincial or municipal plaque. Sources of information include: <ul style="list-style-type: none"> • Municipal correspondence (City of Greater Sudbury, received June 25, 2015) • http://www.heritagetrust.on.ca/Resources-and-Learning/Online-Plaque-Guide.aspx • http://www.pc.gc.ca/apps/dfhd/default_eng.aspx • http://www.waynecook.com/asudbury.html
(5)	Is the [Site or Connection Line] situated on a parcel of land that is on or abutting a National Historic Site?	Neither the Site nor Connection Line Options are situated on such a parcel. See: http://www.historicplaces.ca/en/results-resultats.aspx?m=2&ProvinceId=100058
(6)	Is the [Site or Connection Line] situated on a parcel of land that is on or abutting a known burial site or cemetery?	There is one known cemetery located on a parcel of land abutting the Site. The Ruff Pioneer Cemetery , located at Lot 12 Concession 2, Part 1 & 2 Plan 53R-19082, in Nickel Centre, Ontario (City of Greater Sudbury). The cemetery is located on private property abutting the Site near Norway Lake. The earliest known burial took place in either 1906 or 1912, but the cemetery is no longer used. Information about the Ruff Pioneer Cemetery was obtained from the following sources: <ul style="list-style-type: none"> - http://www.ontarioabandonedplaces.com/happyvalley/happy2.asp - http://wikimapia.org/27634164/Pioneer-Ruff-Cemetery No other known cemeteries were identified through a review of municipal official plans and schedules, correspondence with the City of Greater Sudbury (received June 25, 2015), and searches of the following databases: <ul style="list-style-type: none"> - https://www.consumerbeware.mgs.gov.on.ca/eseach/start.do - http://vitacollections.ca/ogscollections/2818487/data?grd=3186

MTCS Cultural Heritage Requirements		Sources of Information and Proponent Comments
(7)	Is the [Site or Connection Line] situated on a parcel of land that contains structures over forty years old?	<p>Both the Site and the Connection Line Options are located on parcels of land that contain structures that appear to be over forty years old. Structures are primarily homes or structures associated with mineral extraction industries. Structures identified that might be over forty years old include:</p> <ul style="list-style-type: none"> • Within the Site – Along the unnamed road that runs diagonally through the site from the northwest, there are two round storage containers, possibly associated with the railroad, as well as two industrial structures (one located on the Wanapitei River, one near the northwest corner of the site (possibly the Stinton GS Ontario Hydro Station http://www.opg.com/generating-power/hydro/central-ontario/river-systems/Pages/wanapitei-river.aspx). There are a number of homes located along Garson-Coniston Road, most are newer than forty years old, but a few appear to be over forty years old. • Along Connection Option 2 – A few of the homes along Old Skead Road look to be over 40 years old. Some structures associated with mines in the area may be over 40 years old. While some operations in Falconbridge are new as of the early 2000’s, the mining history of the town dates to before 1930. <p>Structures that appear over forty years old were identified through a visual scan of aerial photographs and “Google Streetview” (for example: https://www.google.ca/maps/place/Old+Skead+Rd,+Ontario/@46.594462,-80.838427,3a,75y,310.38h,85.18t/data=!3m7!1e1!3m5!1sFy-Y1jrv3jBM0_S6WG8BIQ!2e0!6s%2F%2Fgeo2.ggpht.com%2Fcbk%3Fpanoid%3DFy-Y1jrv3jBM0_S6WG8BIQ%26output%3Dthumbnail%26cb_client%3Dmaps_sv.tactile.gps%26thumb%3D2%26w%3D100%26h%3D80%26yaw%3D342.9072%26pitch%3D0!7i13312!8i6656!4m2!3m1!1s0x4d2f06723f518289:0x893184191b0ec642) where available. In some cases it was difficult to determine the age of the buildings with the information available. In addition, there may be small structures such as a trapping cabin or other small structure that was not visible through this methodology.</p> <p>At present, none of the structures on the Site or Connection Line Options are documented to have cultural heritage value. Should the project proceed, these structures and any other structures over forty years old will be assessed for cultural heritage value if they will be impacted by the project and appropriate mitigation measures will be applied.</p>
(8)	Is there Aboriginal or local knowledge or accessible documentation suggesting that the [Site or Connection Line] is situated on a parcel of land that contains or is part of a cultural heritage landscape?	<p>There is no accessible documentation indicating that the Site or Connection Line Options fall within a cultural heritage landscape. Sources of information used to research cultural heritage landscapes, landmarks and site associations include:</p> <ul style="list-style-type: none"> • http://www.chrs.ca/en/main.php • http://www.pc.gc.ca/eng/index.aspx • http://www.ontariotrails.on.ca/ • https://www.ontariohistoricalsociety.ca/index.php/services/heritage-ontario-map • http://www.greatersudbury.ca/living/trails/walking-trail-maps/ • http://www.rainbowroutes.com/ • http://www.sudburytourism.ca/ • http://normhc.ca/silverstripe/main/ • http://www.sudburymuseums.ca/index.cfm?app=w_vmuseum&lang=en • http://www.sudburymemories.ca/ • http://www.opg.com/generating-power/hydro/central-ontario/river-systems/Pages/wanapitei-river.aspx • https://uwaterloo.ca/earth-sciences-museum/resources/mining-canada/mining-history-sudbury-area • http://www.wanapitaefirstnation.com/community/about-wfn-community/our-history.html

MTCS Cultural Heritage Requirements		Sources of Information and Proponent Comments
(9)	Is there Aboriginal or local knowledge or accessible documentation suggesting that the [Site or Connection Line] is situated on a parcel of land that is considered a landmark in the local community or contains any structures or sites that are important to defining the character of the area?	<p>At present no evidence has been identified to suggest that the Site or Connection Line options are situated on such a parcel of land based on municipal/general internet searches. Two sites of historical interest that may be considered landmarks are located on properties abutting the Site and Connection Line options, described as follows:</p> <ul style="list-style-type: none"> • Happy Valley (abandoned settlement) – Happy Valley was a settlement located directly south of Falconbridge, the settlement began in 1906, but was abandoned in the 1970’s when the land was purchased by the nearby mining company due to pollution associated with the Falconbridge smelter operation. There are no structures still standing in Happy Valley, it is difficult to determine the exact area that this settlement covered and whether it intersects with the Site boundary. More likely, Happy Valley is located on a parcel abutting the site (see also, information regarding the Ruff Pioneer Cemetery). Information about Happy Valley was obtained from: http://www.ontarioabandonedplaces.com/happyvalley/happy2.asp • Falconbridge Mine and Smelter - Also abutting the Connection Line Option Two are facilities associated with the mining operations currently operated by Sudbury Integrated Nickel Operations. These operations are closely linked to the history of the town, formerly the mine/smelter operator was known as Falconbridge Nickel Mines Limited, and production began in earnest in 1928. Information about the history of mining in Falconbridge was obtained from: http://www.sudburymuseums.ca/index.cfm?app=w_vmuseum&lang=en&currID=2020&parID=2019
(10)	Is there Aboriginal or local knowledge or accessible documentation suggesting that the [Site or Connection Line] is situated on a parcel of land that has special association with a community, person or historical event?	At present no evidence has been identified to suggest that the Site or Connection Line Options are situated on a parcel containing any other land with a special association.