

Request for Decision

Parking Restrictions - Hennessey Road, Walden

Presented To: Operations Committee

Presented: Monday, Jul 10, 2017

Report Date Wednesday, Jun 21, 2017

Type: Managers' Reports

Resolution

THAT the City of Greater Sudbury prohibits parking on the east side of Hennessey Road from Panache North Shore Road to the South Limit;

AND THAT the necessary By-law be prepared to amend Traffic and Parking By-Law 2010-1 to implement the recommended changes as described in the report entitled "Parking Restrictions – Hennessey Road, Walden" from the General Manager of Growth and Infrastructure Services dated June 21, 2017.

Relationship to the Strategic Plan / Health Impact Assessment

This report refers to operational matters.

Report Summary

The Roads and Transportation Services Division received a request to restrict parking on Hennessey Road. The specific area of concern is south of Panache North Shore Road where users of the marina park their vehicles. The report provides information and a recommendation for consideration.

Financial Implications

The cost of sign installations would be funded from the existing operating budget.

Signed By

Report Prepared By

Ryan Purdy
Traffic and Transportation Engineering Analyst
Digitally Signed Jun 21, 17

Health Impact Review

Ryan Purdy
Traffic and Transportation Engineering Analyst
Digitally Signed Jun 21, 17

Manager Review

Joe Rocca
Traffic and Asset Management Supervisor
Digitally Signed Jun 21, 17

Division Review

David Shelsted
Director of Roads & Transportation
Digitally Signed Jun 21, 17

Recommended by the Department

Tony Cecutti
General Manager of Growth and Infrastructure
Digitally Signed Jun 21, 17

Financial Implications

Apryl Lukezic
Co-ordinator of Budgets
Digitally Signed Jun 22, 17

Recommended by the C.A.O.

Ed Archer
Chief Administrative Officer
Digitally Signed Jun 28, 17

Parking Restrictions – Hennessey Road

Background:

Roads and Transportation Services staff received a request from area residents to restrict parking on Hennessey Road due to the difficulties they were having travelling on Hennessey Road when vehicles are parked on both sides of the road.

Hennessey Road is located south of Panache North Shore Road in the former Town of Walden (see Exhibit 'A'). This gravel rural roadway has an operating width of approximately six (6) metres. Currently, parking is allowed on both sides of the roadway.

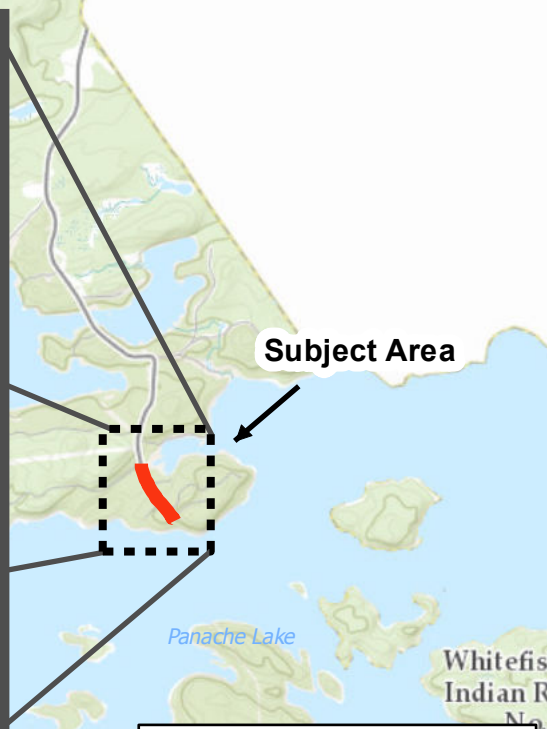
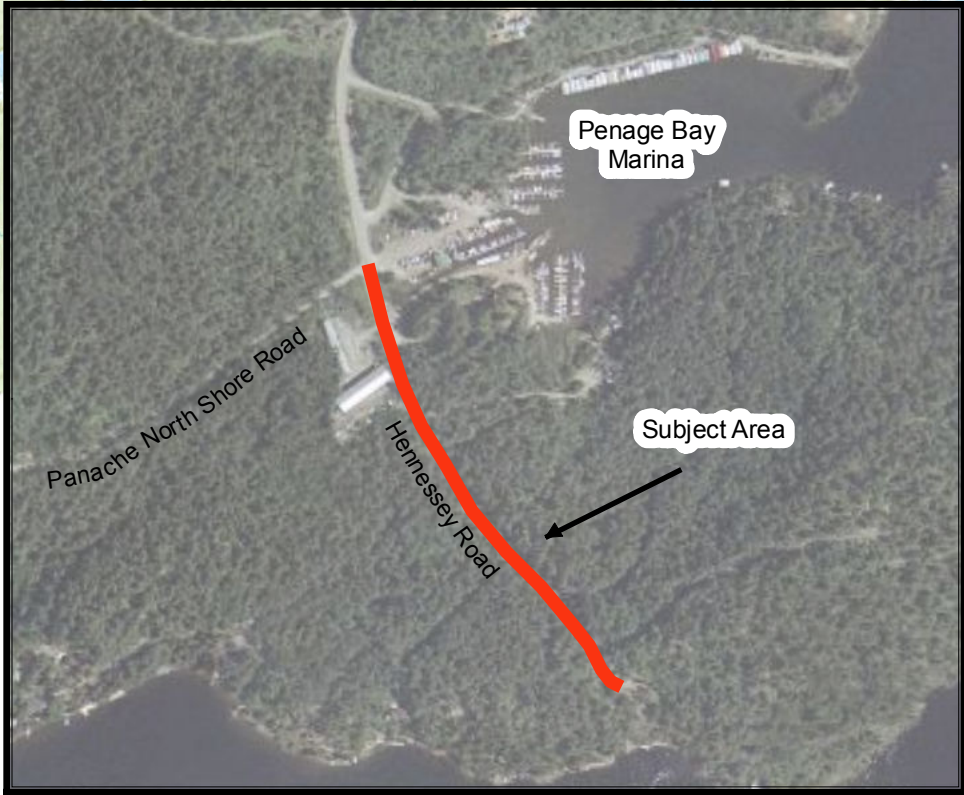
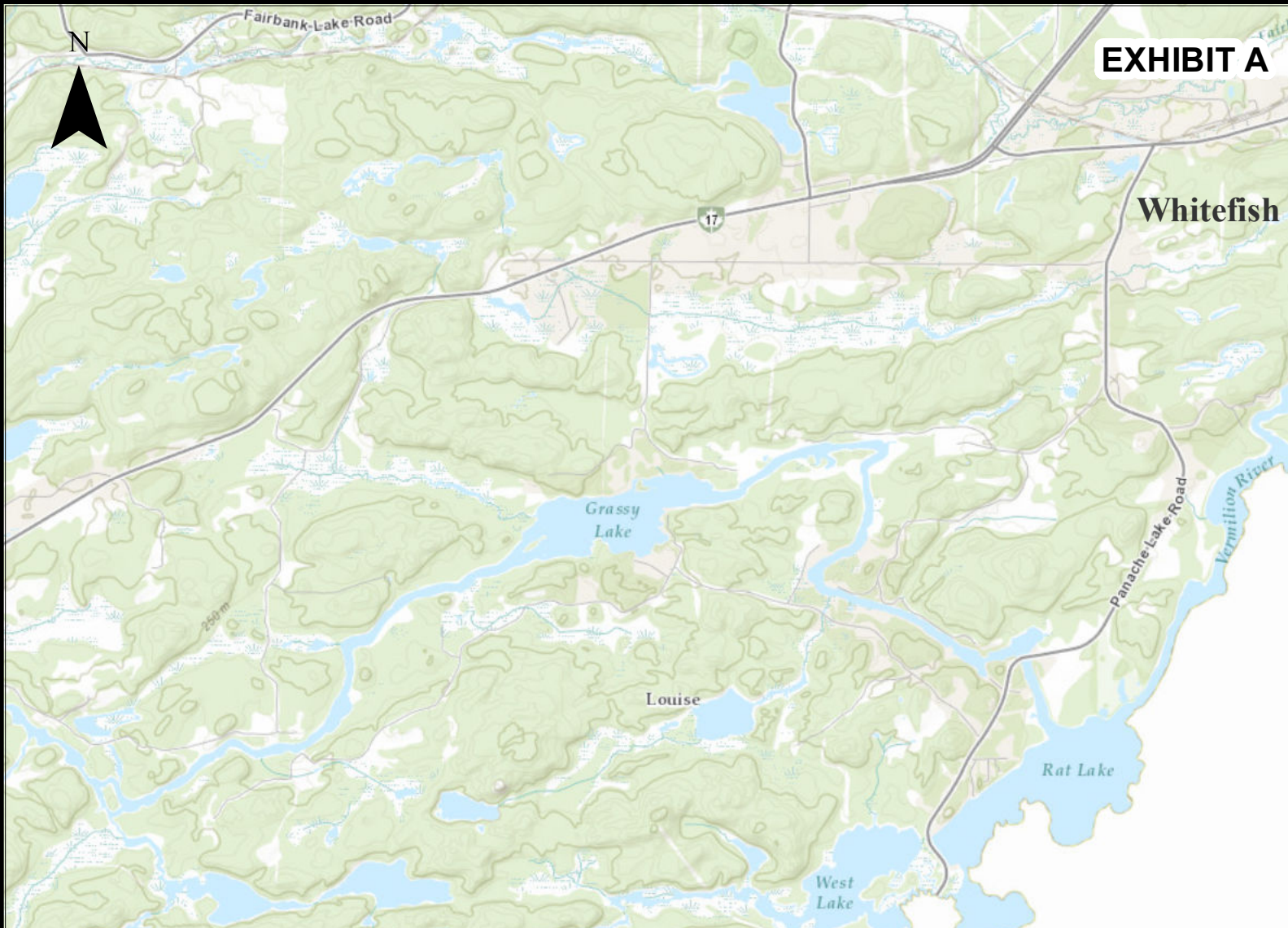
On the east side of Panache Lake Road and opposite Panache North Shore Road is the Penage Bay Marina. The marina charges for parking and as a result users of the marina are parking their vehicles and trailers on both sides of Hennessey Road.

The primary function of a public road is for the safe and efficient movement of traffic. On-street parking is usually permitted when this criteria is met. Due to the width of Hennessey Road when vehicles are parked on both sides, the road becomes difficult for area residents to drive on and restricts access to abutting properties.

To improve safety, it is recommended that parking be prohibited at all times along the east side of Hennessey Road from Panache North Shore Road to the South Limit. Ward 2 Councillor Vagnini has indicated his support for this recommendation.

EXHIBIT A

Whitefish



Parking Restrictions
Hennessey Road
May 24, 2017