

Welcome

to

NAOMI PARK RESIDENCES

We are pleased to present the enclosed information herein for your perusal and consideration of this proposed adult residential project to be constructed soon, and hope it may find your favour. Thank you!...Canadian Group Inc. Sudbury

CONTENTS

Sheet 1 : Rendering illustration of completed project

Sheet 2 : Satellite view and site property

Sheet 3 : Developed project site plan

Sheet 4 : Semi-sub surface garage plan

Sheet 5 : 1st floor plan

Sheet 6: Typical suites layout 2nd, 3rd, 4th, 5th floors

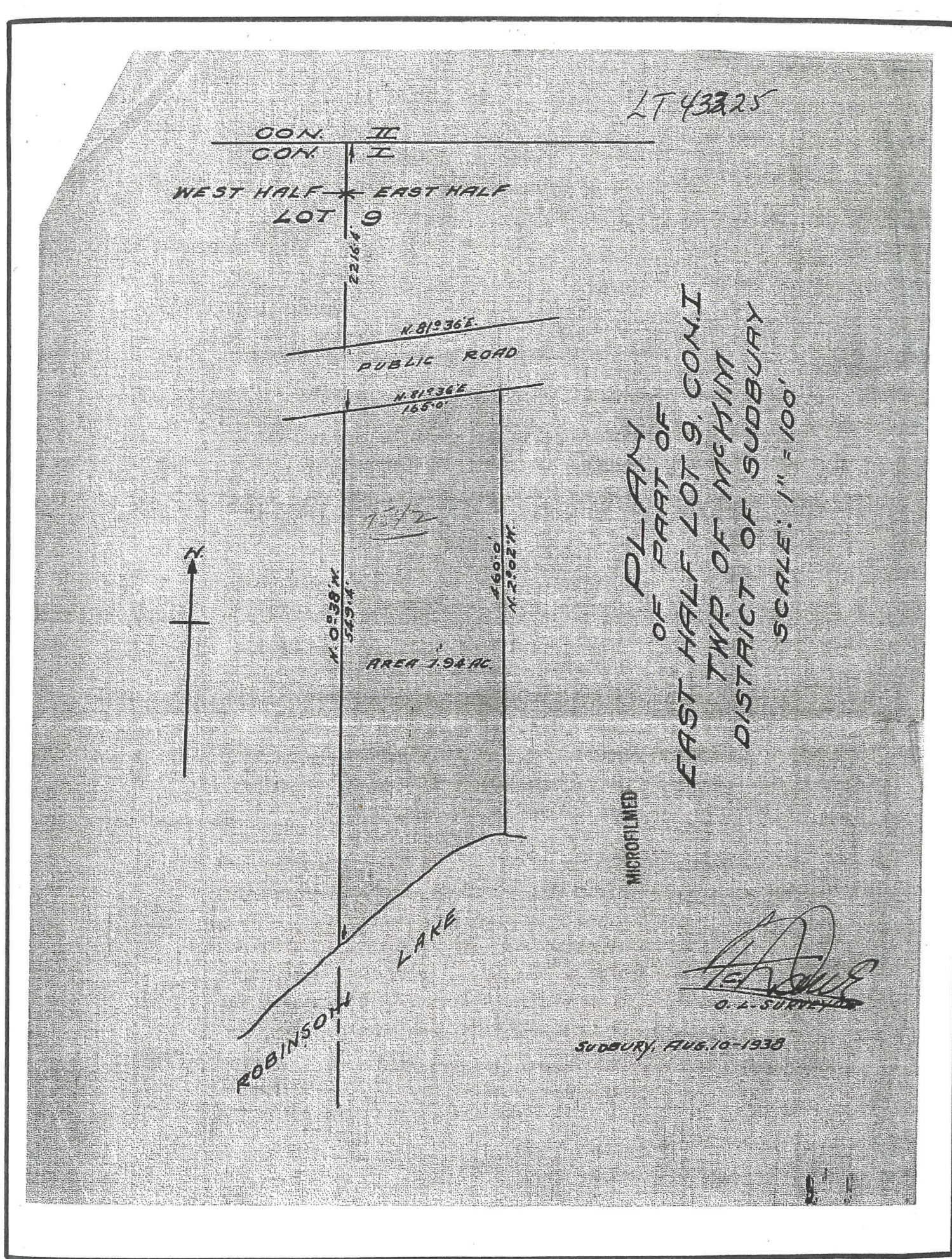


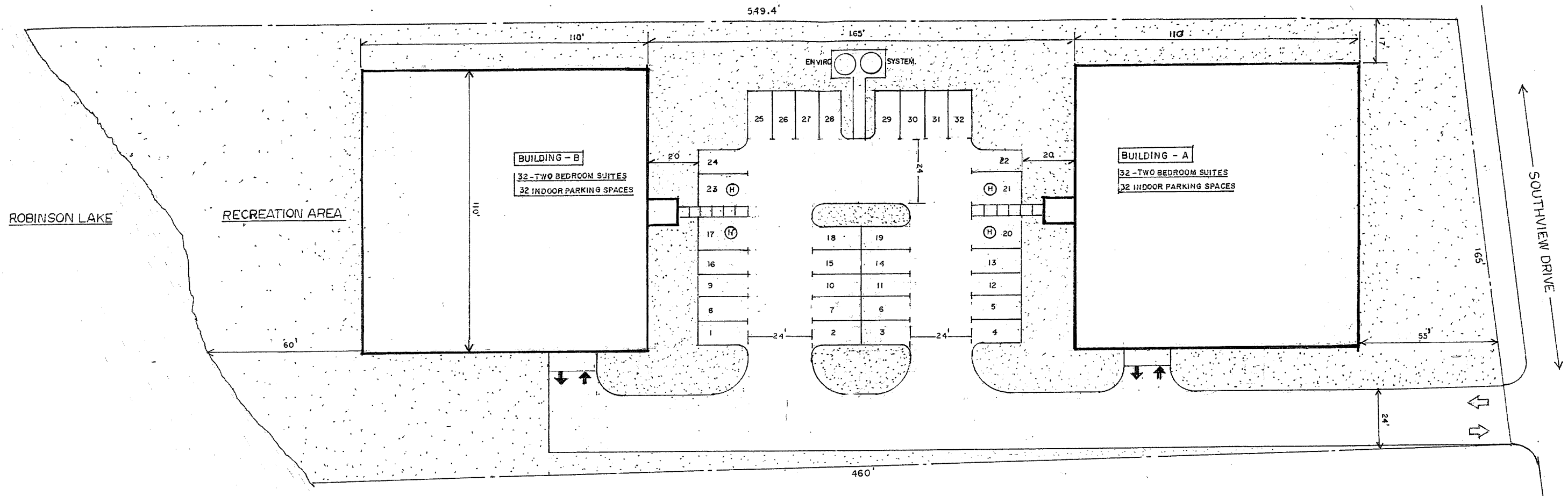
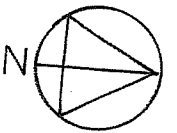
NAOMI PARK RESIDENCES - SUDBURY

BY

CANADIAN GROUP INC





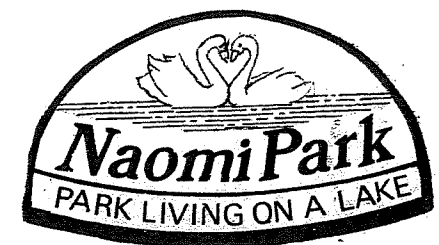


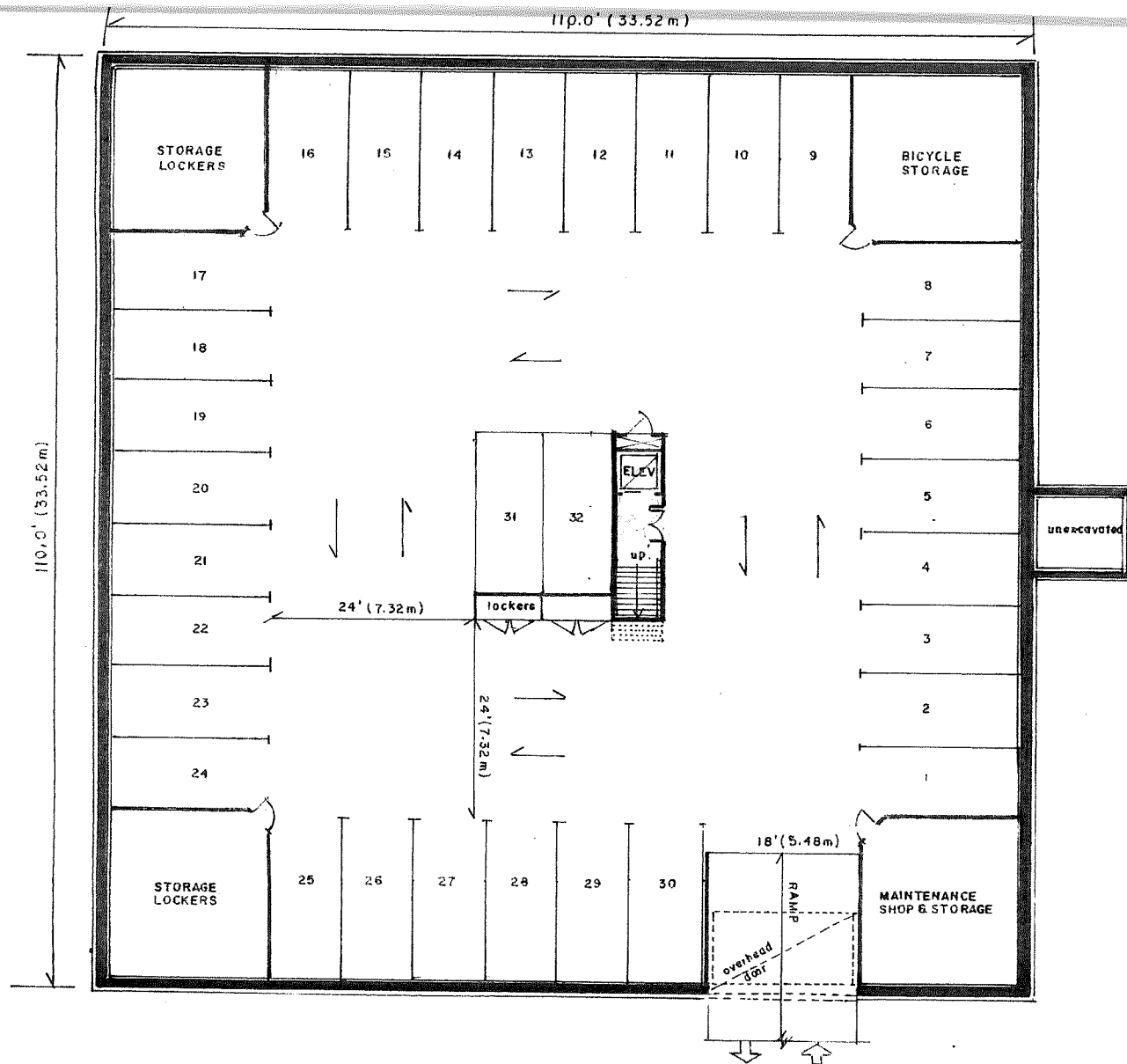
SITE PLAN - PROPOSED 64 SUITE, FIVE STOREY SENIORS RESIDENCE COMPLEX
LOT - 9 SOUTHVIEW DRIVE, SUDBURY

SCALE - 1" = 40'

PCL 7542 SEC SES; PT LT 9 CON 1 McKim as in LT43225; GREATER SUDBURY

DATA - LOT AREA = 87,122 sq ft (8094 sq m) BUILDINGS AREA - (TOTAL) 24,200 sq ft (2248 sq m) RATIO = 28.5 % TOTAL PARKING = 96 SPACES





BASEMENT PLAN - PARKING GARAGE LAYOUT

SCALE - 1" = 20'

32 SPACES 2.6m x 6m

32 STORAGE LOCKERS 3'x4'

16 LOCKING BICYCLE RACKS

PROPOSED 32 SUITE, 2 BEDROOM FOUR STOREY SENIORS' RESIDENCE
LOT 9 - SOUTHVIEW DRIVE, SUDBURY

