

Sudbury Peace Tower Housing Project

City Council
March 24, 2020





“Being let out with no money, nowhere to go, no support — it means we usually have to resort back to stealing in order to get by,” he said. “There has to be something done with the system, and there needs to be help for people like me who find themselves at a loss when they get out of jail.”


Ed Belec, Citizen of Greater Sudbury



On October 28, 2019 the Sudbury Water Tower was renamed –

The **Sudbury Peace Tower** in memory of the late Pastor Jeremy Mahood.





Jeremy and Eileen Mahood established the **I Believe Network (IBN)** which operated First Steps for several years that provided social supports to those in need. The purpose of the IBN is to continue to do social good in the community.

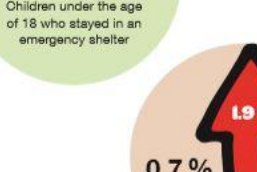
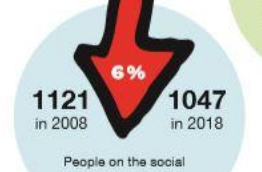
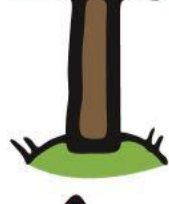
Eileen is the Vice Chairperson for the All Nations Family Housing Corporation known as the Landmark. This 64-unit building has 32 seniors and 32 families providing 52 rent geared to income and 12 market rent units.

The **I Believe Network** will act as the facilitator with its partners to establish a non-profit charity that will provide oversight and governance to develop the operational model.

Report Card on Homelessness for 2018

The first Report Card on Homelessness was developed for 2008.

What has changed in homelessness from 2008 to 2018?



Priorities from the Ten Year Housing and Homelessness Plan: Strengthen approaches to preventing homelessness



1,599 households

were supported through the Community Homelessness Prevention Initiative (CHPI) fund with rental arrears, utility arrears, last month's rent deposits and utility deposits

Ensure emergency accommodation is available when needed, but focus on transitioning to permanent housing



831

people used one of the year-round emergency shelter programs in 2018



126

of 831 were children under the age of 18



261 + 94

women children

escaping domestic violence were provided shelter at YWCA Geneva House
<https://ywcasudbury.ca/programs/genevra-house-shelter/>

<http://tasudbury.ca/>
<http://tasudbury.ca/cedar-place/>
<http://www.jeunesdelarue.ca/>

Address the needs of the most vulnerable populations of homeless

Off The Street low barrier emergency shelter program

426

people stayed here from November 2017 to April 2018
<https://am.omha.ca/>



Outreach services are better connected to shelters and housing programs:

51

people on average were contacted each night
<http://www.jeunesdelarue.ca/>



There is a need to improve housing access and affordability for low income households



3,832

households received subsidized accommodations through City of Greater Sudbury Housing Services



1,047

applicants on the rent-geared-to-income wait list as of December 31, 2018



5 year

wait time for a one bedroom subsidized unit in Greater Sudbury

There is a need for additional supportive services coupled with permanent housing (both supportive housing and supports in private homes)

69

people who had experienced chronic homelessness were supported to stay housed through the Housing First Program
<https://homelessnessnetwork.ca/>

195

people were supported to stay housed by Monarch Recovery Services through supportive/aftercare programs
<http://monarchrecovery.ca/>

240

people were supported to stay housed by the Canadian Mental Health Association through supportive or transitional housing, rent supplements and transitional community support
<https://am.omha.ca/>

Coming Soon...

Complete renovation of 200 Larch Street

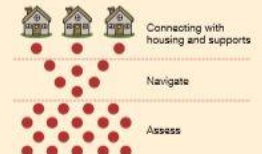
- 15 bed residential Harm Reduction home
- Permanent location for low barrier Off the Street shelter
- Nurse Practitioner Clinic



New construction of a 38-unit affordable housing apartment building through Provincial Home For Good funding



Development of a Co-ordinated Access System:



New five-year homelessness funding under the Federal Reaching Home Program

Building the collaborative.

- ▶ I Believe Network / SW Sudbury Water Tower Ltd.
- ▶ Collège Boréal
- ▶ Habitat for Humanity
- ▶ CMHA
- ▶ CMHC
- ▶ SACY
- ▶ KPMG
- ▶ Elgin Street Mission
- ▶ Samaritan Centre
- ▶ Blue Door Soup Kitchen
- ▶ Centerline Architecture
- ▶ Futurescape Landscaping
- ▶ City of Greater Sudbury
- ▶ SW Sports & Entertainment
- ▶ St. Joseph's Health Centre of Sudbury
- ▶ Sudbury Multicultural & Folk Art Association
- ▶ Kina Gbezhgomi Child & Family Services
- ▶ Sheguiandah First Nation
- ▶ M'Chigeeng First Nation
- ▶ Sheshegwaning First Nation
- ▶ Zhiibaahaasing First Nation
- ▶ Aundeck Omni Kaning First Nation
- ▶ Whitefish River First Nation
- ▶ Wikwemikong Unceded Indian Reserve

Criteria.

This project will have a direct focus that will align with the Home for Good (HFG) criteria to address the following:

- ▶ **Chronic homelessness**
- ▶ **Young Adult Homelessness**
- ▶ **Accessibility Needs**
- ▶ **Homelessness following a transition from provincially funded institutions and service systems (e.g. prisons and hospitals)**

All of the above may include:

Seniors, Young Families, Couples, Singles, and Young Adults

Sudbury Peace Tower Housing Project.

- ▶ New construction project to build 38+ permanent housing units (RGI)
- ▶ Project will be developed on 4 acres of land donated by SW Water Tower Ltd.
- ▶ It will include community space for the entire neighbourhood and offer other essential services and programs.
- ▶ Green Space, Community Gardens, Playground
- ▶ Other unique outdoor recreational offerings
- ▶ The I Believe Network will act as the facilitator with its partners to establish a non-profit charity that will provide oversight and governance to develop the operational model.
- ▶ This space will be part of the dedication to the memory of Jeremy Mahood's legacy.

Funding Eligibility.

- ▶ New Construction project to build 38 permanent units
- ▶ 5.7 million Home For Good (HFG) provincial funding
- ▶ It will be the responsibility of the proponents to secure financing for the entire cost of the project until completed and occupancy has been granted
- ▶ The provincial funding (5.7 million) will be advanced only upon project completion and occupancy, amortized over a 20 year term
- ▶ Project aligns with CMHC National Housing Co-Investment Fund

System-Level Outcomes.

- ▶ Increased sense of inclusion and community connection
- ▶ Improved physical, mental and emotional wellbeing
- ▶ Reduced pressure on institutions and service systems
- ▶ Improved access to other supports to meet individual needs
- ▶ Treat people with dignity and respect
- ▶ This project will add to the much needed affordable housing shortfall of over 2,000 units



Concept Designs by Centreline Architecture



